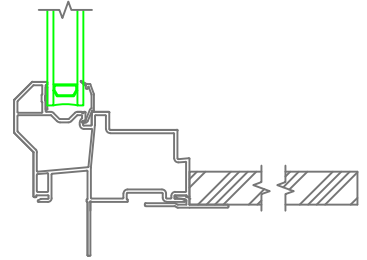
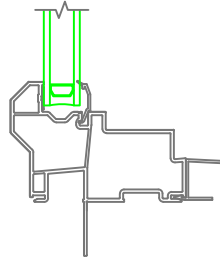
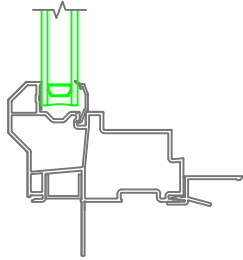
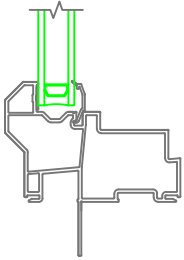
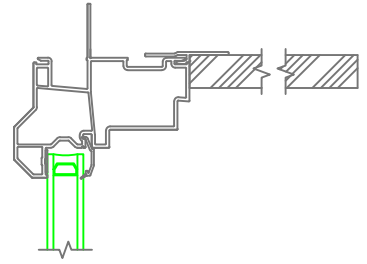
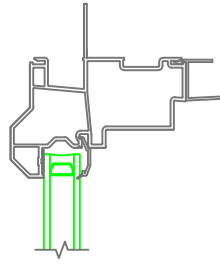
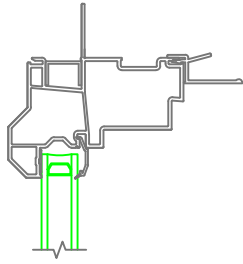
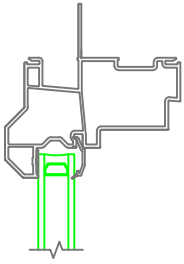


Mathews Brothers
Company

--	--	--	--	--

		DESCRIPTION: Classics New Construction Direct Glaze Picture		
				DATE: October 28, 2019
SHEET:	DRAWN BY:	SCALE:		DWG NO.:

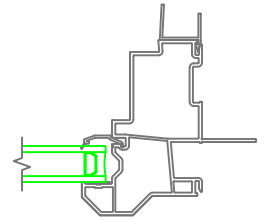
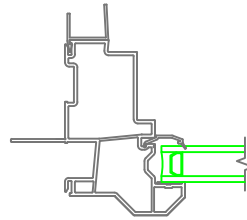
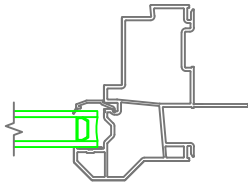
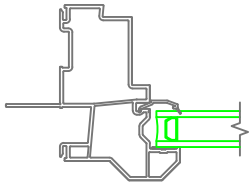


With J-Channel

J-Channel Filler
1/2"-5/8"
Drywall Return

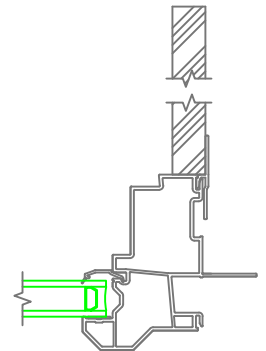
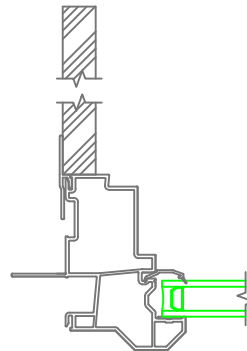
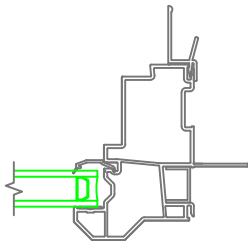
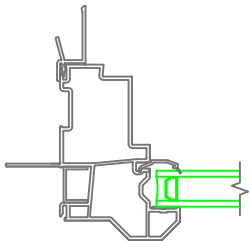
3/4"
Drywall Return

Extension Jamb



With J-Channel

3/4"
Drywall Return



J-Channel Filler

1/2"-5/8"
Drywall Return

Extension Jamb

Mathews Brothers
Company

DESCRIPTION:

Classics New Construction
Direct Glaze Picture

SHEET:

DRAWN BY:

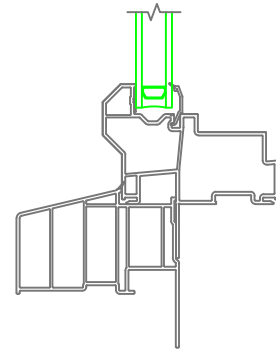
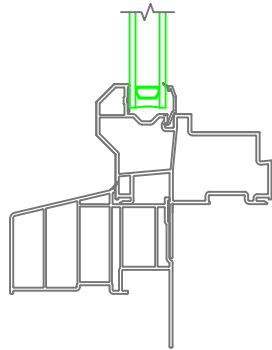
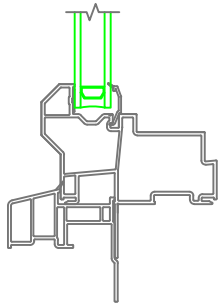
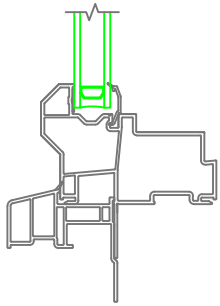
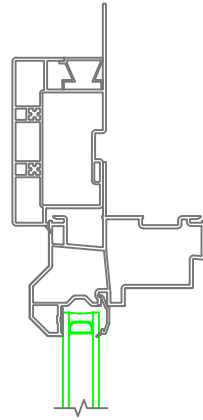
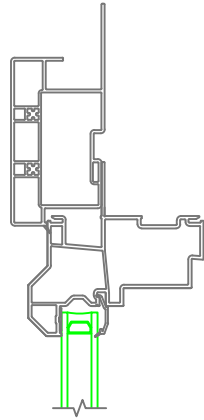
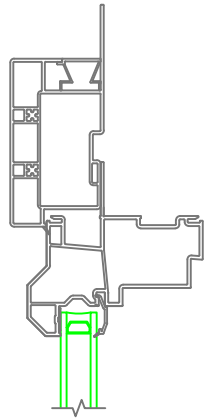
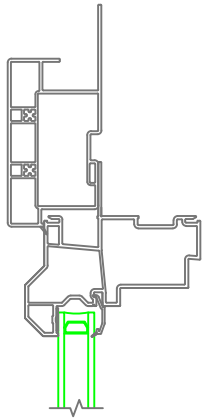
SCALE:

1:4

DATE:

October 28, 2019

DWG NO.:

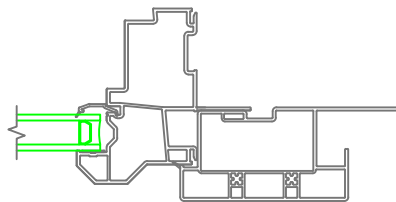
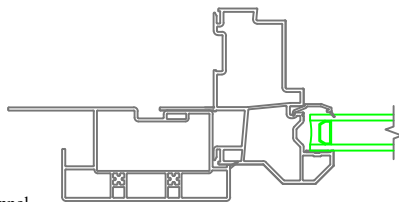


5/4 x 3-1/2 Flat Casing with J-Channel
Standard Sill Nose

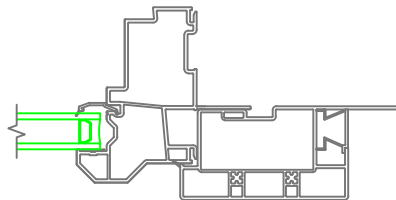
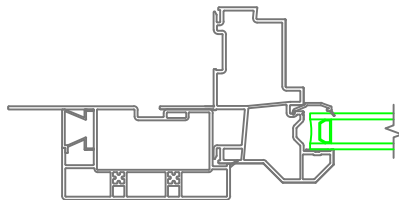
5/4 x 3-1/2 Flat Casing without J-Channel
Standard Sill Nose

5/4 x 3-1/2 Flat Casing with J-Channel
Historical Sill Nose

5/4 x 3-1/2 Flat Casing without J-Channel
Historical Sill Nose



5/4 x 3-1/2 Flat Casing with J-Channel



5/4 x 3-1/2 Flat Casing without J-Channel

Mathews Brothers
Company

DESCRIPTION:

Classics New Construction
Direct Glaze Picture

SHEET:

DRAWN BY:

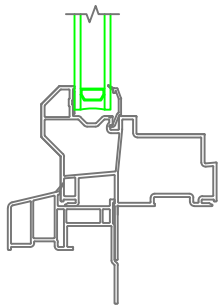
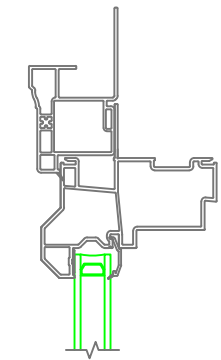
SCALE:

1:4

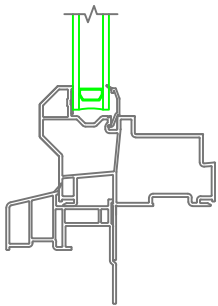
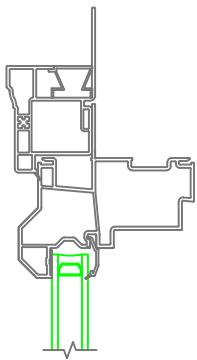
DATE:

October 28, 2019

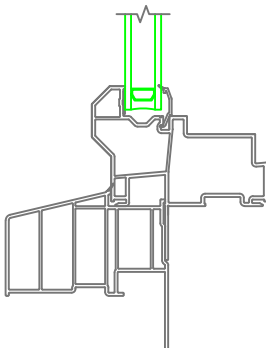
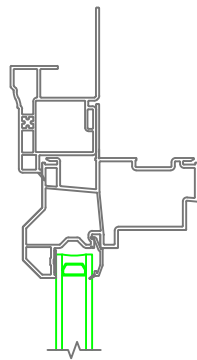
DWG NO.:



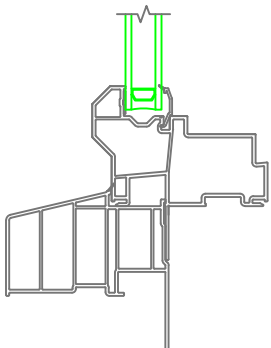
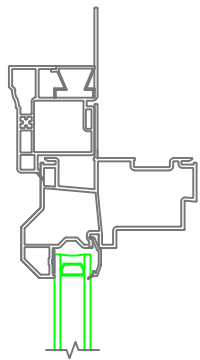
Brickmould Casing with J-Channel
Standard Sill Nose



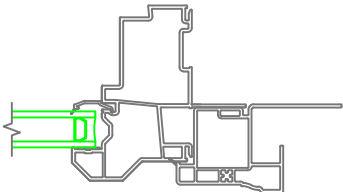
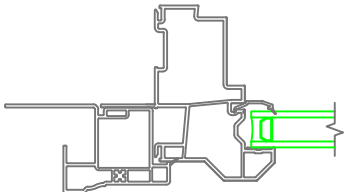
Brickmould Casing without J-Channel
Standard Sill Nose



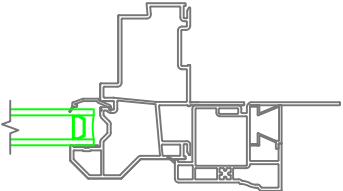
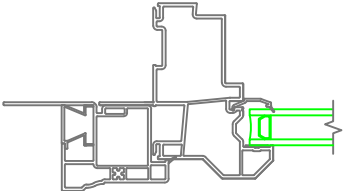
Brickmould Casing with J-Channel
Historical Sill Nose



Brickmould Casing without J-Channel
Historical Sill Nose



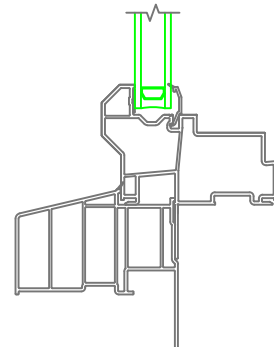
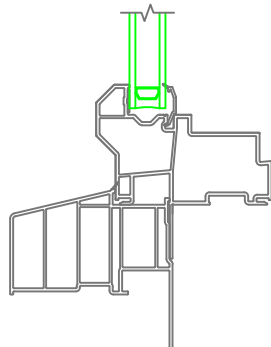
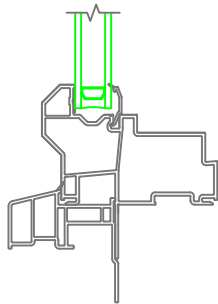
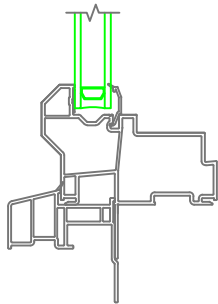
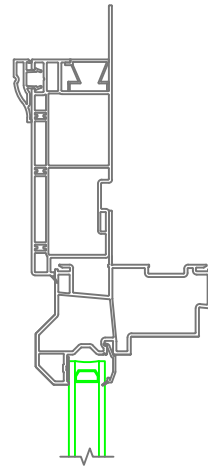
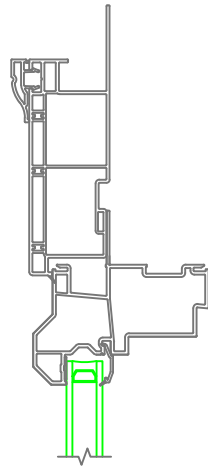
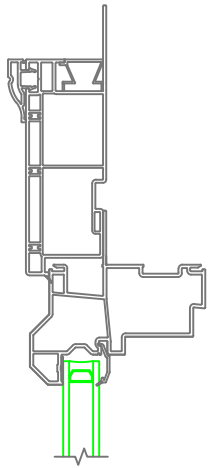
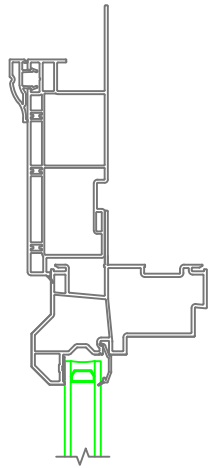
Brickmould Casing with J-Channel



Brickmould Casing without J-Channel

Mathews Brothers
Company

DESCRIPTION:			
Classics New Construction Direct Glaze Picture			
SHEET:	DRAWN BY:	SCALE:	DATE: October 28, 2019
		1:4	DWG NO.:

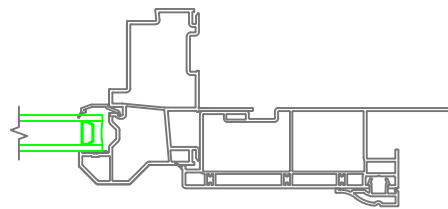
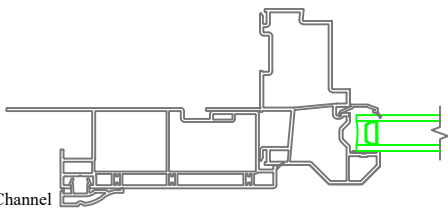


4-1/2 Banded Casing with J-Channel
Standard Sill Nose

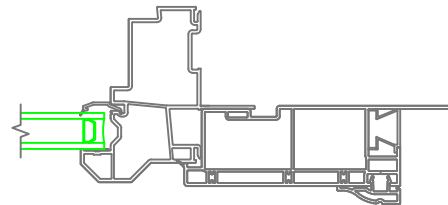
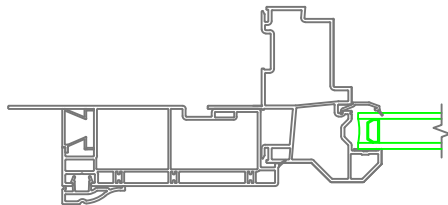
4-1/2 Banded Casing without J-Channel
Standard Sill Nose

4-1/2 Banded Casing with J-Channel
Historical Sill Nose

4-1/2 Banded Casing without J-Channel
Historical Sill Nose



4-1/2 Banded Casing with J-Channel



4-1/2 Banded Casing without J-Channel

Mathews Brothers
Company

DESCRIPTION:

Classics New Construction
Direct Glaze Picture

DATE:
October 28, 2019

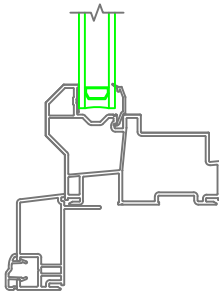
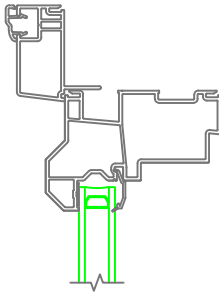
SHEET:

DRAWN BY:

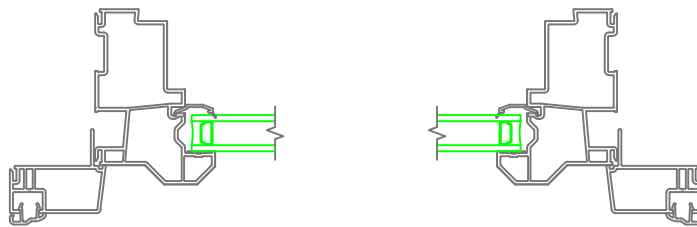
SCALE:

1:4

DWG NO.:



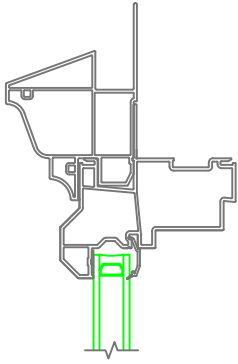
Northern Casing without J-Channel



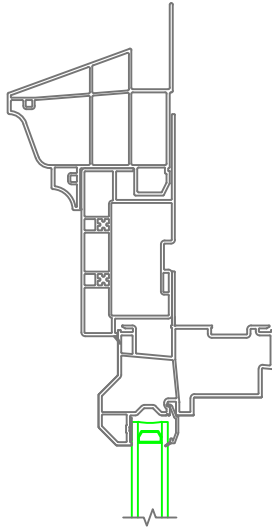
Northern Casing without J-Channel

Mathews Brothers
Company

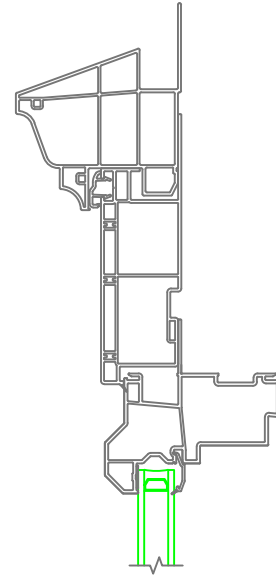
DESCRIPTION:				
Classics New Construction Direct Glaze Picture				
				DATE: October 28, 2019
SHEET:	DRAWN BY:	SCALE: 1:4	DWG NO.:	



With J-Channel and Crown Crosshead Moulding

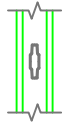


5/4 x 3-1/2 Flat Casing and Crown Crosshead Moulding

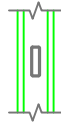


4-1/2 Banded Casing and Crown Crosshead Moulding

Grille in Airspace and Simulated Divided Lite Options



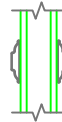
Contour



Rectangle, 5/8"



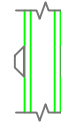
7/8" SDL
with Spacer



7/8" SDL
without Spacer



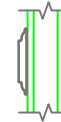
5/8" SDL
with Spacer



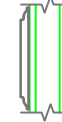
5/8" SDL
without Spacer



5/8" Exterior SDL
with Contour



1-3/8" SDL



2-1/8" SDL

Mathews Brothers
Company

DESCRIPTION:

Classics New Construction
Direct Glaze Picture

DATE:
October 28, 2019

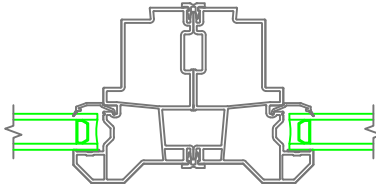
SHEET:

DRAWN BY:

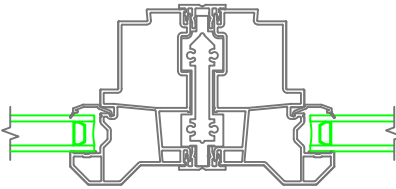
SCALE:

1:4

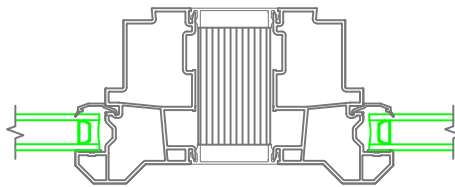
DWG NO.:



Narrow Mull



1/2" Aluminum Reinforced



Solid Spread Mull

Mathews Brothers
Company

DESCRIPTION:				
Classics New Construction Direct Glaze Picture				
SHEET:	DRAWN BY:	SCALE:	DATE:	DWG NO.:
		1:4	October 28, 2019	