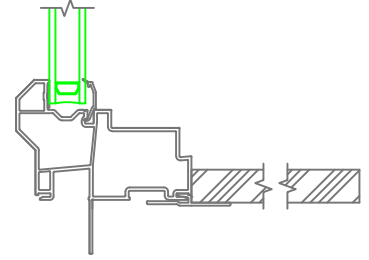
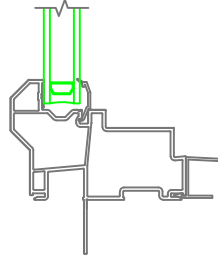
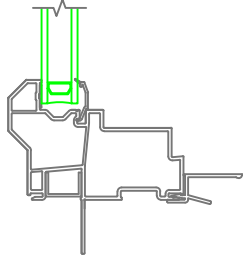
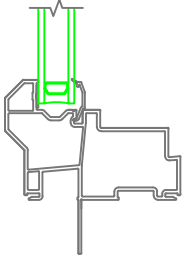
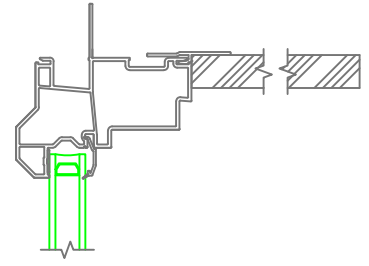
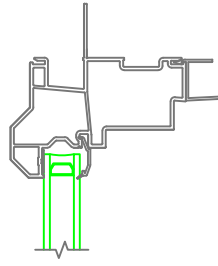
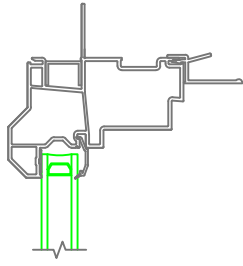
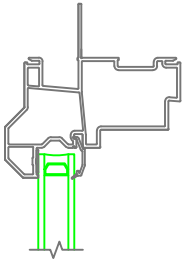


Mathews Brothers
Company

--

	DESCRIPTION: Classics New Construction Direct Glaze Transom			DATE: October 28, 2019
SHEET:	DRAWN BY:	SCALE:		DWG NO.:

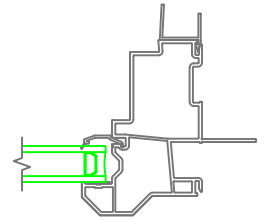
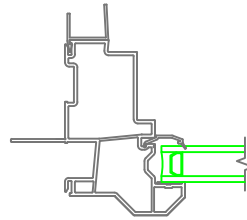
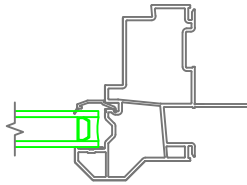
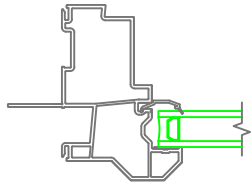


With J-Channel

J-Channel Filler
1/2\"-5/8\"
Drywall Return

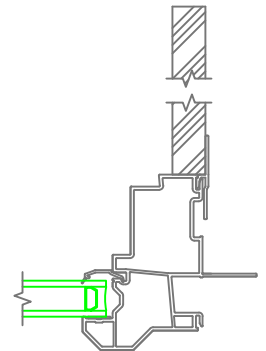
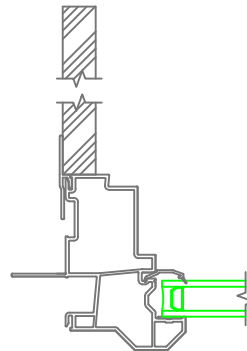
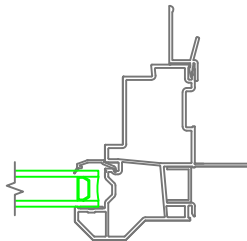
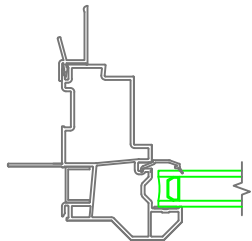
3/4\"
Drywall Return

Extension Jamb



With J-Channel

3/4\"
Drywall Return



J-Channel Filler

1/2\"-5/8\"
Drywall Return

Extension Jamb

Mathews Brothers
Company

DESCRIPTION:

Classics New Construction
Direct Glaze Transom

SHEET:

DRAWN BY:

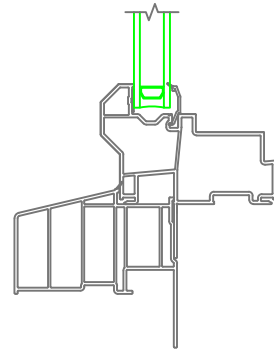
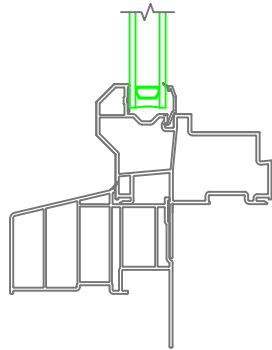
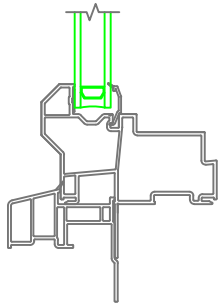
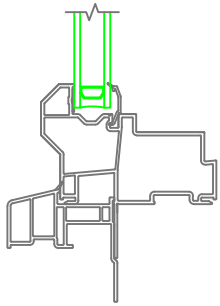
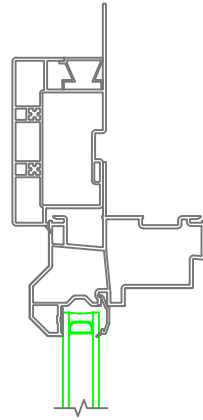
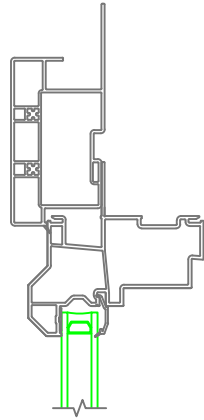
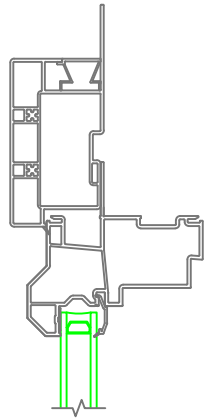
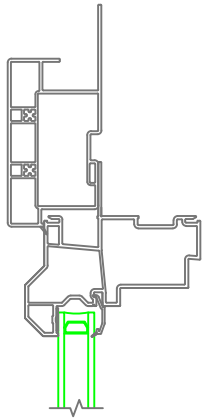
SCALE:

1:4

DATE:

October 28, 2019

DWG NO.:

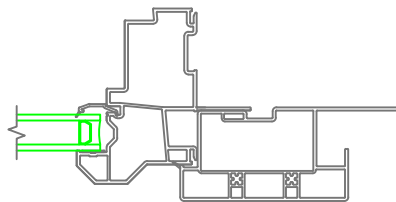
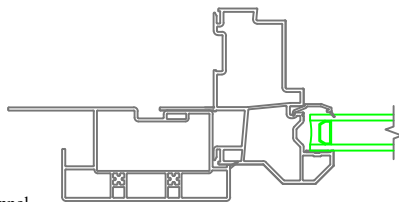


5/4 x 3-1/2 Flat Casing with J-Channel
Standard Sill Nose

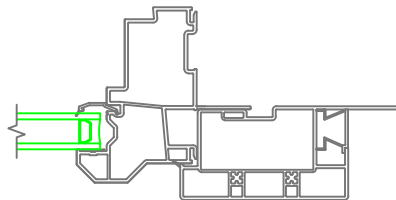
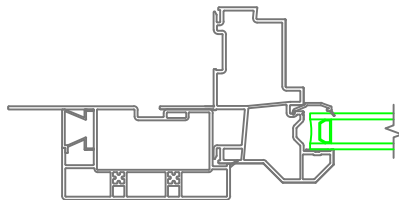
5/4 x 3-1/2 Flat Casing without J-Channel
Standard Sill Nose

5/4 x 3-1/2 Flat Casing with J-Channel
Historical Sill Nose

5/4 x 3-1/2 Flat Casing without J-Channel
Historical Sill Nose



5/4 x 3-1/2 Flat Casing with J-Channel



5/4 x 3-1/2 Flat Casing without J-Channel

Mathews Brothers
Company

DESCRIPTION:

Classics New Construction
Direct Glaze Transom

SHEET:

DRAWN BY:

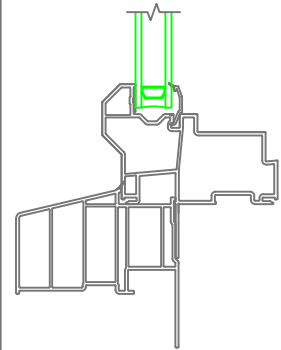
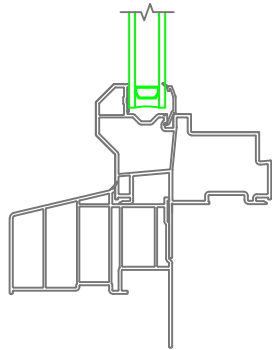
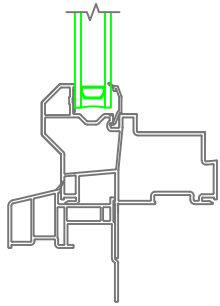
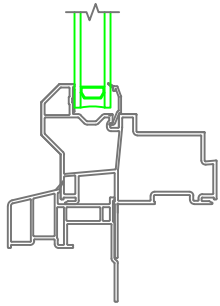
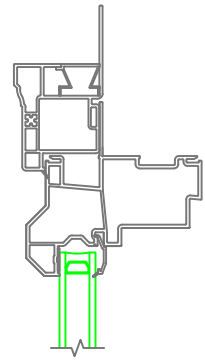
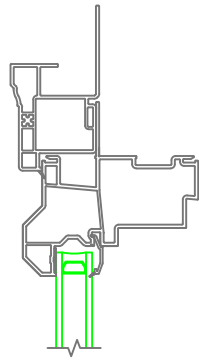
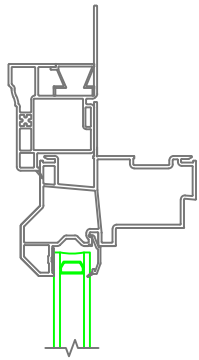
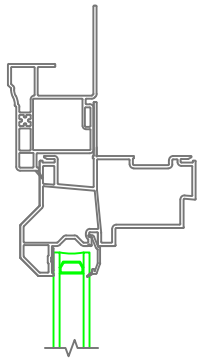
SCALE:

1:4

DATE:

October 28, 2019

DWG NO.:

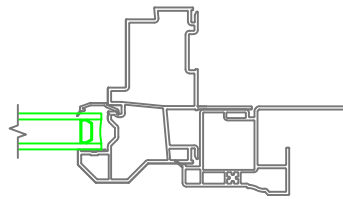
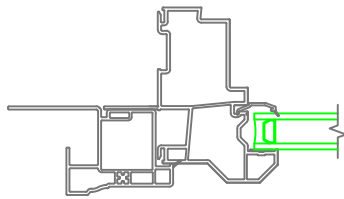


Brickmould Casing with J-Channel
Standard Sill Nose

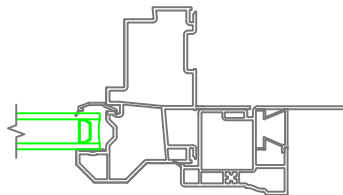
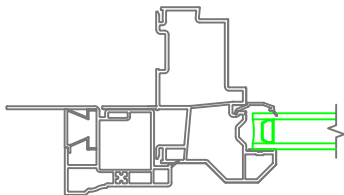
Brickmould Casing without J-Channel
Standard Sill Nose

Brickmould Casing with J-Channel
Historical Sill Nose

Brickmould Casing without J-Channel
Historical Sill Nose



Brickmould Casing with J-Channel



Brickmould Casing without J-Channel

Mathews Brothers
Company

DESCRIPTION:

Classics New Construction
Direct Glaze Transom

DATE:
October 28, 2019

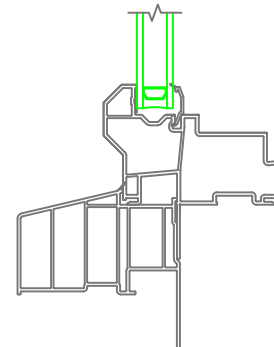
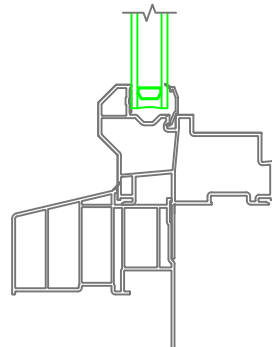
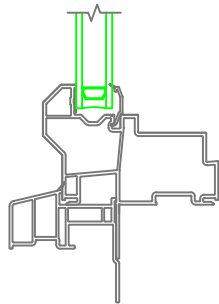
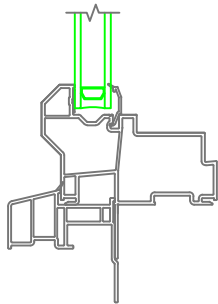
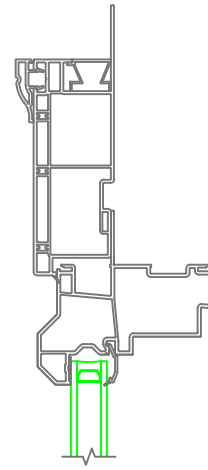
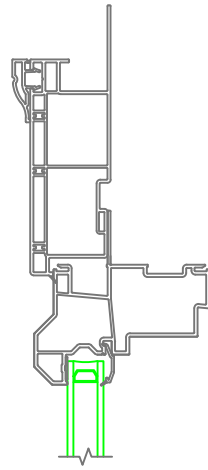
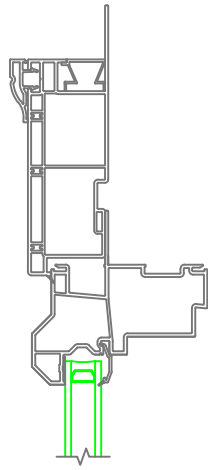
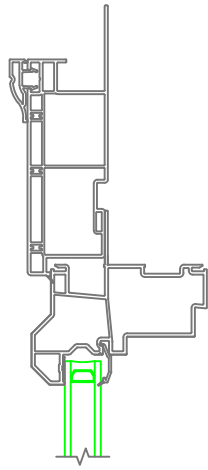
SHEET:

DRAWN BY:

SCALE:

1:4

DWG NO.:

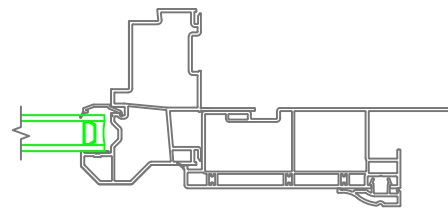
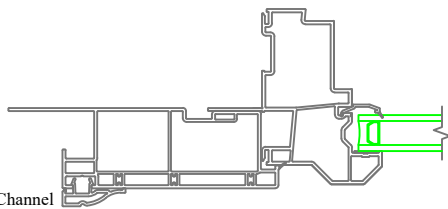


4-1/2 Banded Casing with J-Channel
Standard Sill Nose

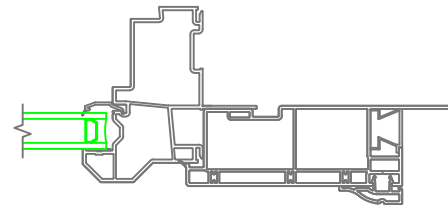
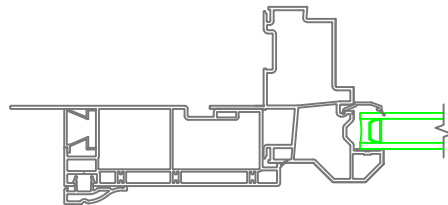
4-1/2 Banded Casing without J-Channel
Standard Sill Nose

4-1/2 Banded Casing with J-Channel
Historical Sill Nose

4-1/2 Banded Casing without J-Channel
Historical Sill Nose



4-1/2 Banded Casing with J-Channel



4-1/2 Banded Casing without J-Channel

Mathews Brothers
Company

DESCRIPTION:

Classics New Construction
Direct Glaze Transom

SHEET:

DRAWN BY:

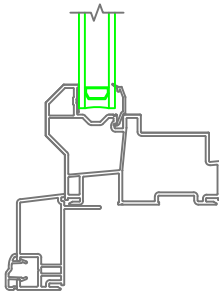
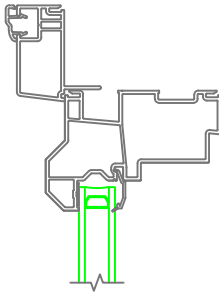
SCALE:

1:4

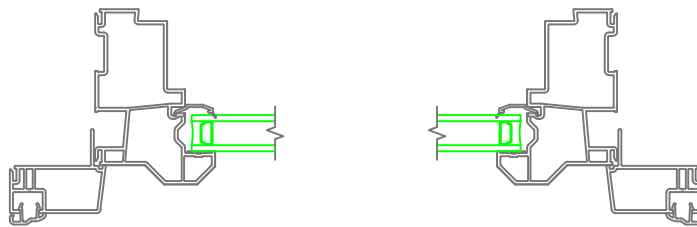
DATE:

October 28, 2019

DWG NO.:



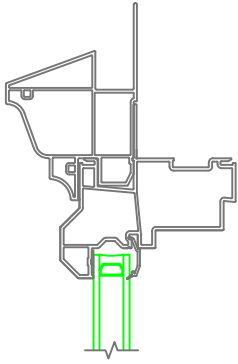
Northern Casing without J-Channel



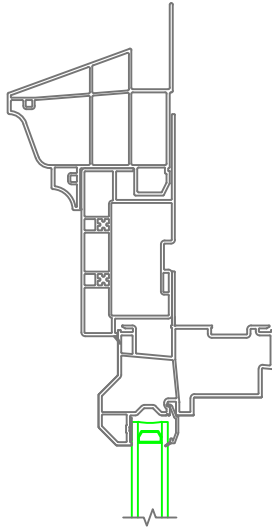
Northern Casing without J-Channel

Mathews Brothers
Company

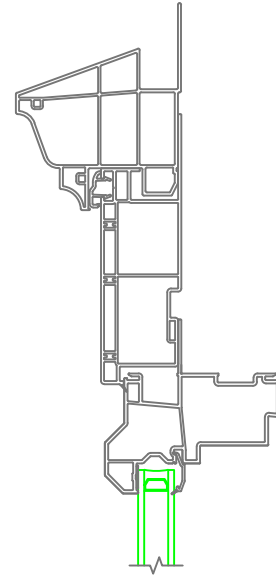
DESCRIPTION:				
Classics New Construction Direct Glaze Transom				
SHEET:		DRAWN BY:		DATE: October 28, 2019
		SCALE: 1:4		DWG NO.:



With J-Channel and Crown Crosshead Moulding

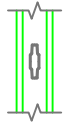


5/4 x 3-1/2 Flat Casing and Crown Crosshead Moulding

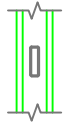


4-1/2 Banded Casing and Crown Crosshead Moulding

Grille in Airspace and Simulated Divided Lite Options



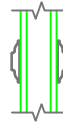
Contour



Rectangle, 5/8"



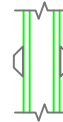
7/8" SDL
with Spacer



7/8" SDL
without Spacer



5/8" SDL
with Spacer



5/8" SDL
without Spacer



5/8" Exterior SDL
with Contour



1-3/8" SDL



2-1/8" SDL

Mathews Brothers
Company

DESCRIPTION:

Classics New Construction
Direct Glaze Transom

DATE:
October 28, 2019

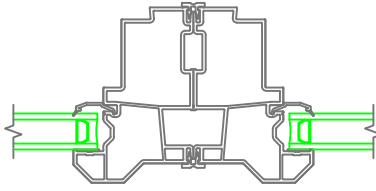
SHEET:

DRAWN BY:

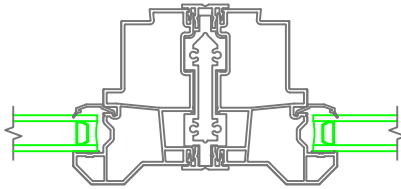
SCALE:

1:4

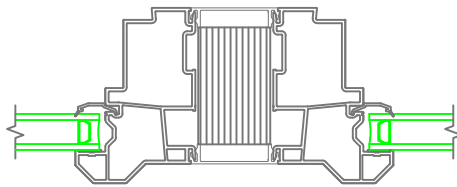
DWG NO.:



Narrow Mull



$\frac{1}{2}$ " Aluminum Reinforced



Solid Spread Mull

Mathews Brothers
Company

DESCRIPTION:				
Classics New Construction Direct Glaze Transom				
SHEET:	DRAWN BY:	SCALE:		DATE: October 28, 2019
		1:4		DWG NO.: