



SANFORD HILLS
COLLECTION



**MATHEWS
BROTHERS**
AMERICA'S OLDEST WINDOW MANUFACTURER



Table of Contents

Table of Contents	1
Welcome to Sanford Hills	3
Introduction	5
Double Hung	7
Double Hung Picture	9
Double Hung Transom	10
Casement	12
Casement Picture	14
Awning	16
Shapes	18
Radius	19
Patio Doors	22
Finish Options.....	24
Divided Lite Options	25
Exterior Casing Options	27
Hardware Finishes.....	28
Size Options / Size Grids	29

Welcome to Mathews Brothers,

Fulfilling the wants and needs of homeowners, Architects, and craftsman for over 170 years. Where people design and manufacture the highest quality doors and windows that deliver strength and beauty for a lifetime. A place where the pride and craftsmanship of the 1800's merges with the technology of the 21st century to produce the Sanford Hills Collection of windows and doors that are as timeless and rugged as the Maine Coast where they are forged.



SANFORD HILLS
COLLECTION



SANFORD HILLS DOUBLE HUNG EXTERIOR

*Classic Blind Stop
Face Mounted Casing*



*SDL Simulated Putty Glazed
Historic Trapezoidal Muntin Bar*



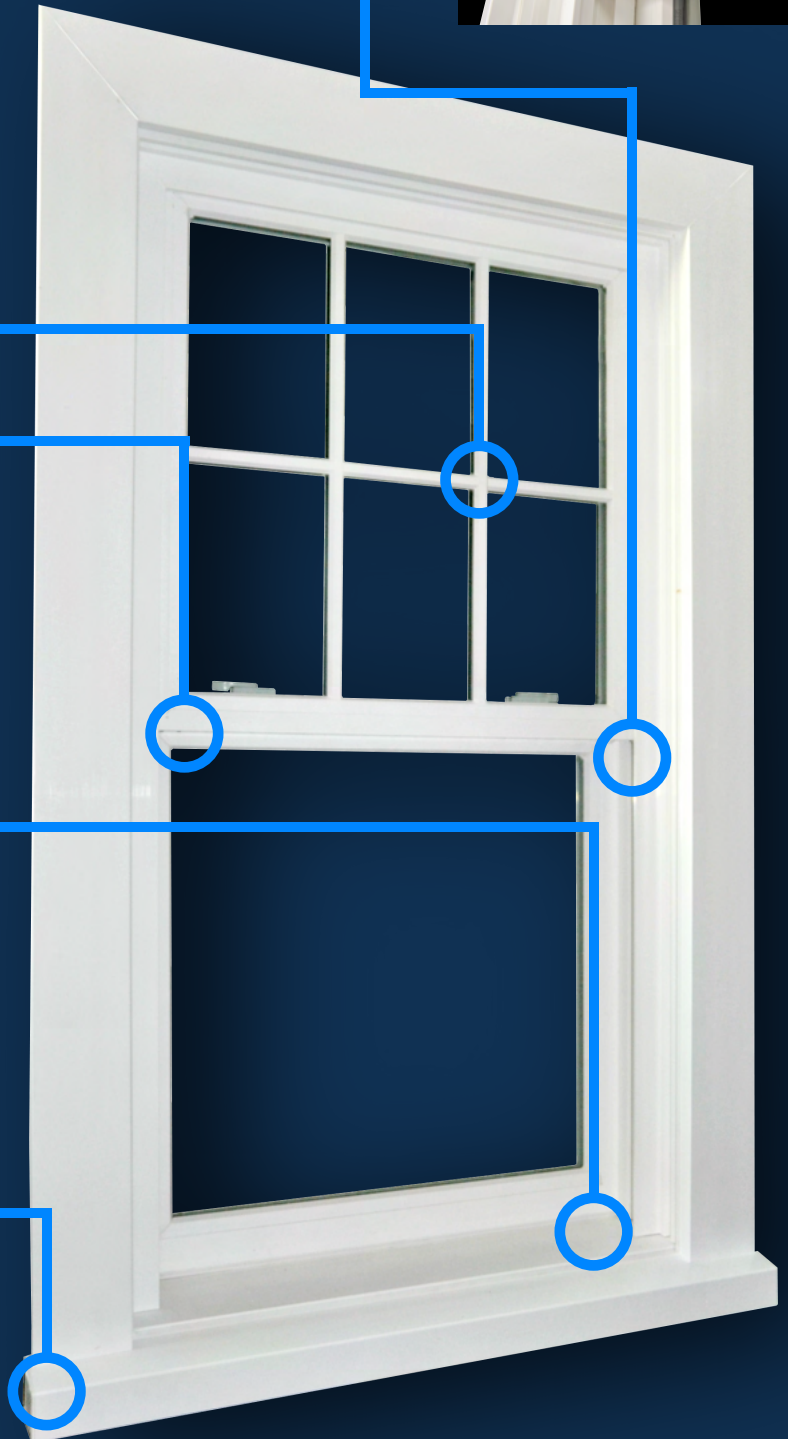
*Architecturally Correct
Equal Daylight Openings*



*Aggrandized Sloped Sill
Improved Water Management*



*Intrinsic
Historic Sill Nose*

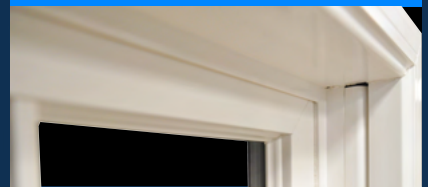


SANFORD HILLS DOUBLE HUNG INTERIOR

*Full 1-3/4" Historic Sash
Enhanced Strength and Elegance*



*Simulated New England Side Stop
Hidden Sash Balance*



*Historic Restoration Profile
Interior Muntin Bar*



*Concealed Tilt Washing Hardware
Traditional Sash Lock and Keeper*



*Historic Restoration Sash Profile
Contoured Sill Dam Profile*



The Sanford Hills Collection

A breakthrough window design that delivers aesthetics and performance at a world-class level. The Sanford Hills Collection has the appearance of a classic New England Wood Window built with a full frame jamb, 1-3/4" historic sash, and a myriad of traditional exterior sill and casing options. Sash profiles, interior sticking and muntin bars pay homage to 1850's craftsmanship while finishes of old and new are available through both Wood-Based and solid extruded interiors.

Despite its classic beauty, the Sanford Hills Collection delivers both structural and thermal performance that stands in a class all its own. Built with highly engineered components that increase strength while minimizing thermal conductivity, the Sanford Hills Collection performs above and beyond industry standards. Simply stated the Sanford Hills Collection is The New Standard.

A Window 165 Years In The Making

Sanford Hills Mathews studied the art of wood joinery as a young man and combined his talents with his family establishing Mathews Brothers in 1854. Mathews Brothers manufactured putty glazed wood window sash, coffins, stair parts, and various millwork. Mathews Brothers even took on a commission to build a five masted schooner, the Jennie Flood Kreger, in 1917. Basically, anything that required a passion for woodworking and an expertise in joinery was within the scope of what the people of Mathews Brothers could create.

Over 50 years ago Mathews Brothers was one of the first wood window manufacturers to adopt the use of dual pane insulating glass in order to elevate the thermal performance of their window offering and 20 years after that Mathews Brothers began manufacturing products made from vinyl in order to serve the need for durable, low maintenance, and structurally sound products. Innovation did not occur at the expense of our unique dedication to craftsmanship and quality.

With an extensive history of providing quality PVC windows and majestic wood windows for thousands of homes each year, it became apparent that windows made from either of these materials offered a plethora of features and benefits, yet these wants and needs were not satisfied with one all-encompassing offering.

The inspiration for the Sanford Hills Collection was driven by what had been our passion for over 165 years. The historic and majestic charm of traditional wood windows combined with the innovation, durability, strength, and thermal performance of vinyl resulted in a window that exceeded industry expectations in aesthetics, thermal performance, and structural integrity. The New Standard. Those who see and experience the Sanford Hills Collection want it to become part of their home.







Double Hung

Ventilating View



Interior View



Exterior View



Traditional & Reliable

The Sanford Hills Double Hung window is the exemplification of our devotion to the aesthetics of the past and the innovations of the future. Double Hung windows are the focal point of colonial architecture and the classic detailing of the Sanford Hills Collection elevates both the interior and the exterior of any home from attractive to historic. Designed to provide industry leading thermal and structural performance while maintaining the classic Double Hung appearance, the Sanford Hills Double Hung is one of the most intuitive windows to install while offering a cornucopia of options and versatility

Standard Frame Features

1. 4⁹/₁₆" Full Jamb (6" Master-Frame) 6-9/16" and custom jambs available
2. Performance Grade 50 Standard (most sizes)
3. Fusion-welded for added strength and performance
4. Integral nailing fin provides stability and water management
5. Enhanced 7/8" dual wall J-Channel to accommodate multiple siding materials
6. Historic beveled sill for water management and aesthetics
7. Traditional blind-stop ensures Architectural sight lines

Standard Sash Features

1. 1³/₄" Stiles and Rails
2. Diverse glazing pockets optimize dual and triple pane glazing
3. No integral lifts for traditional bottom rail appearance
4. Hardware designed for coastal environments for a lifetime
5. Equal daylight opening between top and bottom sash enriches the traditional wood appearance
6. Cam-action lock and traditional keeper secure sashes together while maintaining classic appearance.
7. Invisible tilt latches allow for a clean uninterrupted lock-rail
8. Integral interlocking meeting rail prevents air and water infiltration while resisting forced entry
9. Warm-edge glass spacer contributes to condensation resistance, minimizes thermal transfer, and resists the escape of inert gasses



Double Hung - Sash Glazed Picture



Attention to Detail

The Double Hung Sash Glazed Picture Window was designed specifically to provide an architecturally correct accent when in close proximity to an operable double hung window. Engineered with a beveled heavy bottom rail sash that is secured in place with traditional side-stops, this is the window that gives both the interior and exterior of your home a timeless look.



Sash Glazed Picture Feature



Double Hung - Transom



Elevated Design

This architectural gem provides an influx of natural light and enhanced curb appeal when positioned above a double hung window. The perfect alignment of vertical daylight openings and expanded height provides traditional charm to any interior or exterior view.







Exterior View



Interior View



Functional View

Form and Function

Elevate the thermal and structural performance of your home with the Sanford Hills Casement window where elegant design meets unparalleled functionality. Casement windows provide visible light, unobstructed views, and design versatility while also providing airflow and means of egress when opened. When closed and secured with a multipoint locking system the Sanford Hills casement also provides comforting protection from the elements due to its elite structural performance and impressive thermal values. Crafted for both contemporary and traditional homes, the Sanford Hills Casement window is the right choice for any application.

Standard Frame Options

1. 4-9/16" Full Jamb (6" Master-Frame) 6-9/16" and custom jambs available
2. Performance Grade 65 Standard
3. Fusion-welded for added strength and performance
4. Integral nailing fin provides stability and water management
5. Enhanced 7/8" dual wall J-Channel to accommodate multiple siding materials
6. Concealed multi-point locking system provides enhanced protection
7. Hardware offers a clean appearance and smooth operation
8. Multi-layered gasketing system defends against air and water infiltration.

Standard Sash Features

1. Diverse glazing pockets optimize dual and triple pane glazing
2. Hardware designed for coastal environments for a lifetime
3. Warm-edge glass spacer contributes to condensation resistance, minimizes thermal transfer, and resists the escape of inert gasses.
4. Available with False Checkrail that creates Double Hung appearance with Casement operation and performance
5. Diverse hinge options offer either clear opening for means of egress or segmented operation for ease of cleaning.

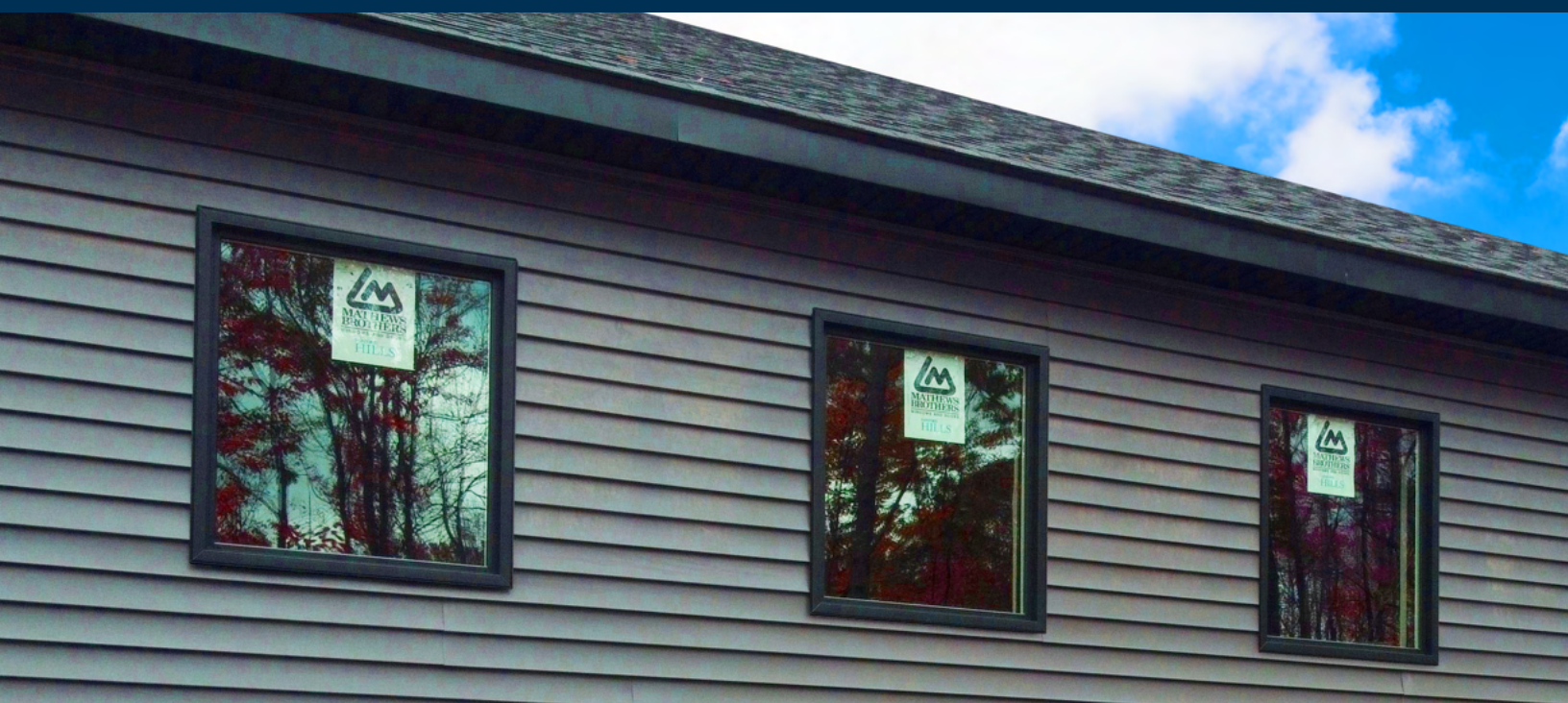






Clean Sightlines

The Casement Picture Window was designed specifically to provide an architecturally correct accent when in close proximity to an operable casement window. This architectural gem provides an influx of natural light and enhanced curb appeal when featured in solitude or next to an operable casement window. The perfect alignment of vertical and horizontal daylight openings with other Sanford Hills window types provides character and light to any interior or exterior view.







Interior View



Exterior View



Ventilating View

Alternate Opening

Designed to open outward from the bottom, Awning windows provide excellent ventilation and protection from the rain, making them perfect for all seasons, and ideal for kitchens, bathrooms, or as complementary elements to larger windows. Elevate the thermal and structural performance of your home with the Sanford Hills Awning window where elegant design meets unparalleled functionality. Awning windows provide visible light, unobstructed views, and design versatility. Designed with top-hinge operation for ventilation of windows that have been traditionally non-operative. Crafted for both contemporary and traditional homes, the Sanford Hills Awning window is the right choice for any application.

Standard Frame Features

1. 4-9/16" Full Jamb (6" Master-Frame) 6-9/16" and custom jambs available
2. Performance Grade 80 Standard (many sizes)
3. Fusion-welded for added strength and performance
4. Integral nailing fin provides stability and water management
5. Enhanced 7/8" dual wall J-Channel to accommodate multiple siding materials.
6. Concealed multi-point locking system provides enhanced protection
7. Hardware offers a clean appearance and smooth operation
8. Multi-layered gasketing system defends against air and water infiltration.

Standard Sash Features

1. Diverse glazing pockets optimize dual and triple pane glazing
2. Hardware designed for coastal environments for a lifetime
3. Warm-edge glass spacer contributes to condensation resistance, minimizes thermal transfer, and resists the escape of inert gasses.





Shapes - Geometric

Shape Your View

Unleash bold architectural expression with Sanford Hills Polygon windows. From the sharp precision of hexagons and triangles to the unique outlines of pentagons and trapezoids, these windows are designed to make a striking visual statement. The perfect answer to demanding designs, Sanford Hills Polygon windows enhance the visual impact of your home while inviting natural light in, creating dynamic nuances and highlights from sunrise to sunset.

Standard Features

1. 4-9/16" Full Jamb (6" Master-Frame) 6-9/16" and custom jambs available
2. Performance Grade 65 Standard (most sizes)
3. Fusion-welded for added strength and performance
4. Integral nailing fin provides stability and water management
5. Enhanced 7/8" dual wall J-Channel to accommodate multiple siding materials
6. Diverse glazing pockets optimize dual and triple pane glazing
7. Warm-edge glass spacer contributes to condensation resistance, minimizes thermal transfer, and resists the escape of inert gasses

Geometric Selections

- | | |
|---------------------------------|---------------------------|
| 1. Rectangle | 12. Flat Parallelogram |
| 2. Clipped Corner Rectangle | 13. Pitched Parallelogram |
| 3. Double Clipped Rectangle | 14. Diamond |
| 4. Trapezoid | |
| 5. Right Angle Triangle | |
| 6. Clipped Right Angle Triangle | |
| 7. Truncated Hip | |
| 8. Isosceles Triangle | |
| 9. Pentagon | |
| 10. Octagon | |
| 11. Hexagon | |



Shapes - Radius

Design Curve

Classical, Sukiya, Gothic, Renaissance, Contemporary, and Nautical architecture have all provided a spotlight for radius and curved windows. Sanford Hills Radius windows featuring graceful curves and natural light flow, bring a timeless beauty and design curve to any façade. From the commanding presence of an Extended Half Round to the whimsical accent of a Full Circle, radius windows are crafted to create a memorable architectural statement.

Standard Features

1. 4-9/16" Full Jamb (6" Master-Frame) 6-9/16" and custom jambs available
2. Performance Grade 65 Standard (most sizes)
3. Fusion-welded for added strength and performance
4. Integral nailing fin provides stability and water management
5. Enhanced 7/8" dual wall J-Channel to accommodate multiple siding materials
6. Diverse glazing pockets optimize dual and triple pane glazing
7. Warm-edge glass spacer contributes to condensation resistance, minimizes thermal transfer, and resists the escape of inert gasses

Radius Selections

- | | |
|-----------------------------|---------------------|
| 1. Half Round | 12. Extended Gothic |
| 2. Extended Half round | 13. Circle |
| 3. Quarter Round | 14. Oval |
| 4. Extended Quarter Round | |
| 5. Eyebrow | |
| 6. Extended Eyebrow | |
| 7. Quarter Eyebrow | |
| 8. Extended Quarter Eyebrow | |
| 9. Ellipse | |
| 10. Extended Ellipse | |
| 11. Gothic | |





SANFORD HILLS
COLLECTION





Patio Doors

Patio Doors That Bring the Outdoors In

Designed to create a seamless transition between indoor comfort and outdoor beauty Sanford Hills sliding patio doors not only enhance any view but offer smooth access between exterior and interior spaces. Perfect for entertaining or simply enjoying a tranquil view, Sanford Hills sliding patio doors bring a promise of functionality and elegance.

Customization

The Sanford Hills patio door is not restricted by the mundane conventions of standard patio doors. Custom sizes, exterior trim options, multiple hardware finishes, a myriad of exterior colors and a broad pallet of interior finishes all come together to create a patio door that is the perfect fit for your home.



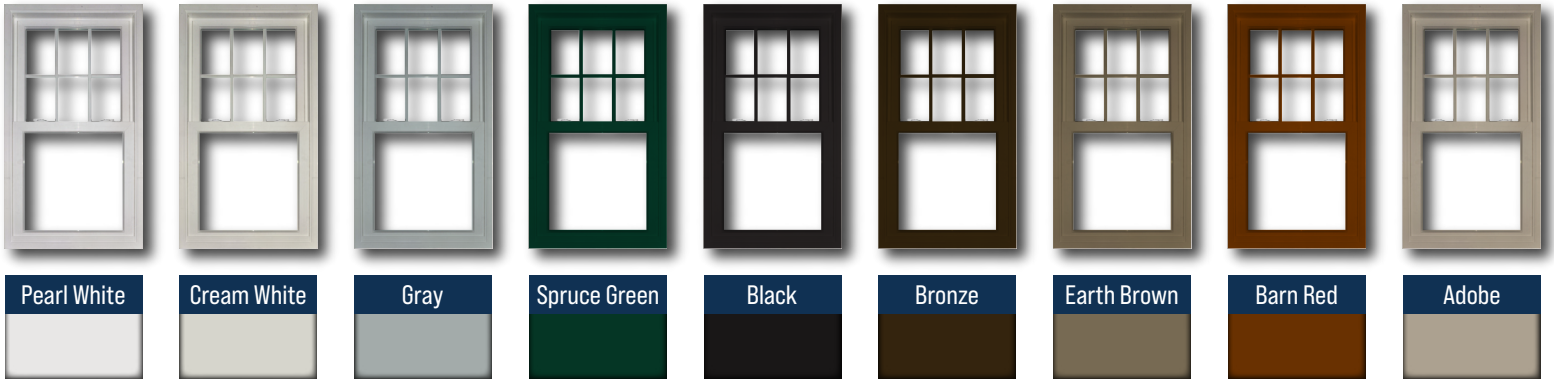
Standard Features

1. 4-9/16" Full Jamb (6" Master-Frame)
2. Performance Grade 50 Standard (2 Panel)
3. Fusion-welded for added strength and performance
4. Integral nailing fin provides stability and water management
5. Enhanced 7/8" dual wall J-Channel to accommodate multiple siding materials.
6. 5" Colonial Stiles and rails
7. Diverse glazing pockets optimize dual and triple pane glazing
8. Multi-point lock secures panels while maintaining classic appearance.



Finish Options

Exterior Bring color to the exterior finish of any Sanford Hills window with a myriad of colors to choose from.



Interior Discover the right blend of interior accent with one of four eclectic interior finishes.



Unfinished Wood Laminate
The perfect blend of aesthetic flexibility and classic beauty. A real wood based laminate option that can be painted, stained, or even clear coated* to bring out the natural beauty of wood. *Water Based Finishes Required



Black Laminate
A rich black tone combined with a subtle detailed texture, the black interior laminate option makes a bold statement while meeting today's architectural demands.

Enhanced Historic Look with Pediment Heads



Adding a pediment head to the top of your Sanford Hills windows adds even more accented historic beauty to your project's appearance.

Pediment heads bring out an authentic colonial style for your home or project.



Wood Laminate - Unfinished



Wood Laminate - Field Applied Gel Stain



Divided Lite Options

Multiple Options for Multiple Lites

Mathews Brothers has been creating windows with divided lites for over 170 years. The application of divided lites is basically an attempt to copy the aesthetic provided by the millworkers and glazers that crafted the original Mathews Brothers windows in the 1800's. Mathews Brothers created the standard and continue to offer the best fit and finish and the most historically accurate divided lites available today.

Grilles Between the Glass (GBG) bring a value engineered option while providing an ease of cleaning that many homeowners desire. Simulated Divided Lites (SDL) provide a historic and architecturally accurate simulation of the original muntin bars of the past while maintaining the thermal performance of modern-day glazing options.



5/8" Rectangular (GBG)



5/8" Historic Putty Muntin (SDL)



1 1/8" Historic Putty Muntin (SDL)



2 1/8" Historic Putty Checkrail (SDL)



7/8" Contoured (GBG)



5/8" Historic Restoration Muntin (SDL)



1 1/8" Historic Restoration Muntin (SDL)



2 1/8" Historic Restoration Checkrail (SDL)





Factory Applied, Architecturally Correct

Architectural and historic details were of the utmost importance in the design of the Sanford Hills collection of doors and windows. That is why every window and door is built with a traditional blind stop that accommodates the flus mounting of exterior casing options. Sanford Hills factory applied casing options not only save time but also create a visual aesthetic that cannot be reproduced in the field. All of the Sanford Hills exterior casing options are full and accurate in dimension as there were no sacrifices in material weight and depth. Mathews Brothers doesn't cut corners, we add value to every corner with our exterior casing process.



Flat Casing

Crafted in the image of a traditional 5/4 X 4 board, Sanford Hills Flat Casing is dimensioned full and square at a nominal size of 1" X 3 1/2" just like the wood boards that come from a mill.



Banded Casing

For many years in New England, craftsmen have been casing windows with a traditional 1 X 5 board inclusive of a decorative 1 3/8" band molding applied to the perimeter. Sanford Hills Banded Casing is dimensioned full and square at a nominal size of 3/4" x 4 1/2" with an actual band molding applied to create the proper dimension and shadow lines of this classic window treatment.



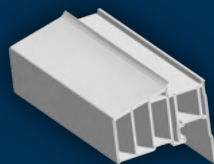
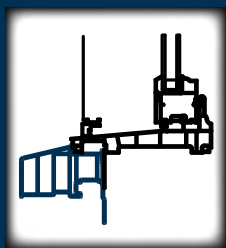
Staff Bead Casing

Staff Bead casing is dimensioned the same as commonplace brickmold but is shaped with the architectural lines of the exterior casing that is often an accent item on a historical brick building or classic brownstone.

Historic Sill Nose



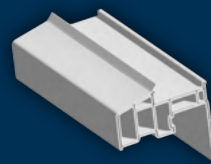
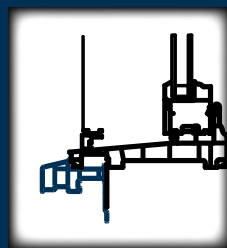
The traditional sloped sill of the Sanford Hills double hung window is accentuated by a proper sill nose that creates an extended accent that protrudes out from the sill but extends past the frame creating historic sill horns for the exterior casings to merge with. The Historic Sill Nose has a heavy face dimension that recalls window structure from the 19th century or simply works today as a bold feature.



Standard Sill Nose



The traditional sloped sill of the Sanford Hills double hung window is accentuated by a proper sill nose that creates an extended accent that protrudes out from the sill but extends past the frame creating historic sill horns for the exterior casings to merge with. The Standard Sill Nose has a minimalistic face dimension that mimics window structure from the 20th century or simply works today when clean lines are desired.



Hardware Finishes

Double Hung Sash Lock



White



Black



Adobe



Nickel

Casement and Awning Handle



White



Black



Adobe



Nickel

Casement and Awning Lock



White



Black



Adobe



Nickel

Patio Door Handle

Patio Door handles work in conjunction with the multi point lock installed in all Sanford Hills patio doors. There is a center mounted lever on the interior of the handle for lock operation. Exterior Key operation is available.



White



Black



Adobe



Gold



Nickel



White

Standard Sizes



Rough Opening	22½"	24½"	26½"	28½"	30½"	32½"	34½"	36½"	38½"	39½"	40½"	42½"
Unit Size	22"	24"	26"	28"	30"	32"	34"	36"	38"	39"	40"	42"



**DOUBLE HUNG
DUAL GLAZED**

DH1414	DH1814	DH1814	DH2014	DH2214	DH2414	DH2614	DH2814	DH3014	DH3114	DH3214	DH3414	
DH1416	DH1816	DH1816	DH2016	DH2216	DH2416	DH2616	DH2816	DH3016	DH3116	DH3216	DH3416	
DH1418	DH1818	DH1818	DH2018	DH2218	DH2418	DH2618	DH2818	DH3018	DH3118	DH3218	DH3418	
DH1420	DH1820	DH1820	DH2020	DH2220	DH2420	DH2620	DH2820	DH3020	DH3120	DH3220	DH3420	
DH1422	DH1822	DH1822	DH2022	DH2222	DH2422	DH2622	DH2822	DH3022	DH3122	DH3222	DH3422	
DH1424	DH1824	DH1824	DH2024	DH2224	DH2424	DH2624	DH2824	DH3024	DH3124	DH3224	DH3424	
DH1425	DH1825	DH1825	DH2025	DH2225	DH2425	DH2625	DH2825	DH3025	DH3125	DH3225	DH3425	
DH1426	DH1826	DH1826	DH2026	DH2226	DH2426	DH2626	DH2826	DH3026	DH3126	DH3226	DH3426	
DH1428	DH1828	DH1828	DH2028	DH2228	DH2428	DH2628	DH2828	DH3028	DH3128	DH3228	DH3428	
DH1430	DH1830	DH1830	DH2030	DH2230	DH2430	DH2630	DH2830	DH3030	DH3130	DH3230	DH3430	
DH1432	DH1832	DH1832	DH2032	DH2232	DH2432	DH2632	DH2832	DH3032	DH3132	DH3232	DH3432	
DH1434	DH1834	DH1834	DH2034	DH2234	DH2434	DH2634	DH2834	DH3034	DH3134	DH3234	DH3434	
DH1436	DH1836	DH1836	DH2036	DH2236	DH2436	DH2636	DH2836	DH3036	DH3136	DH3236	DH3436	

38"

42"

46"

50"

54"

58"

60"

62"

66"

70"

74"

78"

82"

38½"

42½"

46½"

50½"

54½"

58½"

60½"

62½"

66½"

70½"

74½"

78½"

82½"

Custom Sizes Also Available

Standard Sizes



Rough Opening	22½"	24"	26½"	28½"	30½"	32½"	34½"	36½"	38½"	39½"	40½"
Unit Size	22"	24"	26"	28"	30"	32"	34"	36"	38"	39"	40"



**DOUBLE HUNG
TRIPLE GLAZED**

 3DH1416	 3DH1616	 3DH1816	 3DH2016	 3DH2216	 3DH2416	 3DH2616	 3DH2816	 3DH3016	 3DH3116	 3DH3216
 3DH1418	 3DH1618	 3DH1818	 3DH2018	 3DH2218	 3DH2418	 3DH2618	 3DH2818	 3DH3018	 3DH3118	 3DH3218
 3DH1420	 3DH1620	 3DH1820	 3DH2020	 3DH2220	 3DH2420	 3DH2620	 3DH2820	 3DH3020	 3DH3120	 3DH3220
 3DH1422	 3DH1622	 3DH1822	 3DH2022	 3DH2222	 3DH2422	 3DH2622	 3DH2822	 3DH3022	 3DH3122	 3DH3222
 3DH1424	 3DH1624	 3DH1824	 3DH2024	 3DH2224	 3DH2424	 3DH2624	 3DH2824	 3DH3024	 3DH3124	 3DH3224
 3DH1425	 3DH1625	 3DH1825	 3DH2025	 3DH2225	 3DH2425	 3DH2625	 3DH2825	 3DH3025	 3DH3125	 3DH3225
 3DH1426	 3DH1626	 3DH1826	 3DH2026	 3DH2226	 3DH2426	 3DH2626	 3DH2826	 3DH3026	 3DH3126	 3DH3226
 3DH1428	 3DH1628	 3DH1828	 3DH2028	 3DH2228	 3DH2428	 3DH2628	 3DH2828	 3DH3028	 3DH3128	 3DH3228
 3DH1430	 3DH1630	 3DH1830	 3DH2030	 3DH2230	 3DH2430	 3DH2630	 3DH2830	 3DH3030	 3DH3130	 3DH3230
 3DH1432	 3DH1632	 3DH1832	 3DH2032	 3DH2232	 3DH2432	 3DH2632	 3DH2832	 3DH3032		
 3DH1434	 3DH1634	 3DH1834	 3DH2034	 3DH2234	 3DH2434	 3DH2634	 3DH2834			

42"	42½"
46"	46½"
50"	50½"
54"	54½"
58"	58½"
60"	60½"
62"	62½"
66"	66½"
70"	70½"
74"	74½"
78"	78½"

Custom Sizes Also Available

Standard Sizes



Rough Opening	36 1/2"	42 1/2"	48 1/2"	54 1/2"	60 1/2"	64 1/2"	68 1/2"	72 1/2"
Unit Size	36"	42"	48"	54"	60"	64"	68"	72"



**DOUBLE HUNG
PICTURE**

DP2831	DP3431	DP4031	DP4631	DP5231	DP5631	DP6031	DP6431
DP2835	DP3435	DP4035	DP4635	DP5235	DP5635	DP6035	DP6435
DP2839	DP3439	DP4039	DP4639	DP5239	DP5639	DP6039	DP6439
DP2843	DP3443	DP4043	DP4643	DP5243	DP5643	DP6043	DP6443
DP2847	DP3447	DP4047	DP4647	DP5247	DP5647	DP6047	DP6447
DP2851	DP3451	DP4051	DP4651	DP5251	DP5651	DP6051	DP6451
DP2853	DP3453	DP4053	DP4653	DP5253	DP5653	DP6053	DP6453
DP2855	DP3455	DP4055	DP4655	DP5255	DP5655	DP6055	DP6455
DP2859	DP3459	DP4059	DP4659	DP5259	DP5659	DP6059	DP6459
DP2863	DP3463	DP4063	DP4663	DP5263	DP5663	DP6063	DP6463
DP2867	DP3467	DP4067	DP4667	DP5267	DP5667	DP6067	DP6467

38"

42"

46"

50"

54"

58"

60"

62"

66"

70"

74"

38 1/2"

42 1/2"

46 1/2"

50 1/2"

54 1/2"

58 1/2"

60 1/2"

62 1/2"

66 1/2"

70 1/2"

74 1/2"

Custom Sizes Also Available

Standard Sizes

Rough Opening	22½"	24½"	26½"	28½"	30½"	32½"	34½"	36½"	38½"	39½"	40½"	42½"	48½"	54½"	60½"	66½"	72½"
Unit Size	22"	24"	26"	28"	30"	32"	34"	36"	38"	39"	40"	42"	48"	54"	60"	66"	72"

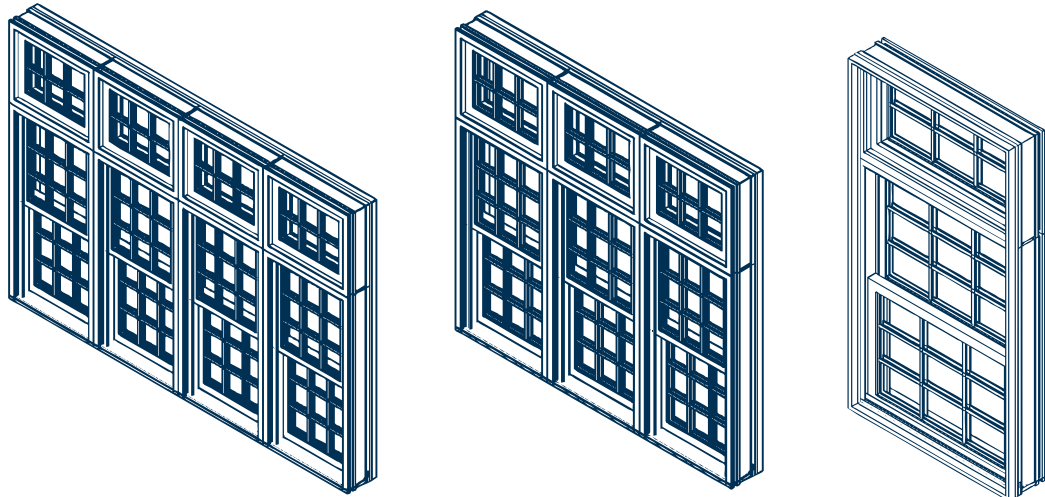


**DOUBLE HUNG
TRANSOM**

TR1406	TR1606	TR1806	TR2006	TR2206	TR2406	TR2606	TR2806	TR3006	TR3106	TR3206	TR3406	TR4006	TR4606	TR5206	TR5806	TR6406
TR1408	TR1608	TR1808	TR2008	TR2208	TR2408	TR2608	TR2808	TR3008	TR3108	TR3208	TR3408	TR4008	TR4608	TR5208	TR5808	TR6408
TR1410	TR1610	TR1810	TR2010	TR2210	TR2410	TR2610	TR2810	TR3010	TR3110	TR3210	TR3410	TR4010	TR4610	TR5210	TR5810	TR6410
TR1412	TR1612	TR1812	TR2012	TR2212	TR2412	TR2612	TR2812	TR3012	TR3112	TR3212	TR3412	TR4012	TR4612	TR5212	TR5812	TR6412
TR1414	TR1614	TR1814	TR2014	TR2214	TR2414	TR2614	TR2814	TR3014	TR3114	TR3214	TR3414	TR4014	TR4614	TR5214	TR5814	TR6414
TR1416	TR1616	TR1816	TR2016	TR2216	TR2416	TR2616	TR2816	TR3016	TR3116	TR3216	TR3416	TR4016	TR4616	TR5216	TR5816	TR6416
TR1418	TR1618	TR1818	TR2018	TR2218	TR2418	TR2618	TR2818	TR3018	TR3118	TR3218	TR3418	TR4018	TR4618	TR5218	TR5818	TR6418
TR1420	TR1620	TR1820	TR2020	TR2220	TR2420	TR2620	TR2820	TR3020	TR3120	TR3220	TR3420	TR4020	TR4620	TR5220	TR5820	TR6420
TR1422	TR1622	TR1822	TR2022	TR2222	TR2422	TR2622	TR2822	TR3022	TR3122	TR3222	TR3422	TR4022	TR4622	TR5222	TR5822	TR6422
TR1424	TR1624	TR1824	TR2024	TR2224	TR2424	TR2624	TR2824	TR3024	TR3124	TR3224	TR3424	TR4024	TR4624	TR5224	TR5824	TR6424
TR1425	TR1625	TR1825	TR2025	TR2225	TR2425	TR2625	TR2825	TR3025	TR3125	TR3225	TR3425	TR4025	TR4625	TR5225	TR5825	TR6425
TR1426	TR1626	TR1826	TR2026	TR2226	TR2426	TR2626	TR2826	TR3026	TR3126	TR3226	TR3426	TR4026	TR4626	TR5226	TR5826	TR6426
TR1428	TR1628	TR1828	TR2028	TR2228	TR2428	TR2628	TR2828	TR3028	TR3128	TR3228	TR3428	TR4028	TR4628	TR5228	TR5828	TR6428
TR1430	TR1630	TR1830	TR2030	TR2230	TR2430	TR2630	TR2830	TR3030	TR3130	TR3230	TR3430	TR4030	TR4630	TR5230	TR5830	TR6430
TR1432	TR1632	TR1832	TR2032	TR2232	TR2432	TR2632	TR2832	TR3032	TR3132	TR3232	TR3432	TR4032	TR4632	TR5232	TR5832	TR6432
TR1434	TR1634	TR1834	TR2034	TR2234	TR2434	TR2634	TR2834	TR3034	TR3134	TR3234	TR3434	TR4034	TR4634	TR5234	TR5834	TR6434
TR1436	TR1636	TR1836	TR2036	TR2236	TR2436	TR2636	TR2836	TR3036	TR3136	TR3236	TR3436	TR4036	TR4636	TR5236	TR5836	TR6436

14"	16"	18"	20"	22"	24"	26"	28"	30"	32"	33"	34"	36"	38"	40"	42"	44"
14½"	16½"	18½"	20½"	22½"	24½"	26½"	28½"	30½"	32½"	33½"	34½"	36½"	38½"	40½"	42½"	44½"

Example Configurations



Custom Sizes Also Available

Standard Sizes



Rough Opening	8 1/2"	20 1/2"	24 1/2"	26 1/2"	28 1/2"	30 1/2"	32 1/2"	36 1/2"
Unit Size	18"	20"	24"	26"	28"	30"	32"	36"



CASEMENT

CA1824	CA2024	CA2424	CA2624	CA2824	CA3024	CA3224	CA3624
CA1828	CA2028	CA2428	CA2628	CA2828	CA3028	CA3228	CA3628
CA1830	CA2030	CA2430	CA2630	CA2830	CA3030	CA3230	CA3630
CA1832	CA2032	CA2432	CA2632	CA2832	CA3032	CA3232	CA3632
CA1836	CA2036	CA2436	CA2636	CA2836	CA3036	CA3236	CA3636
CA1842	CA2042	CA2442	CA2642	CA2842	CA3042	CA3242	CA3642
CA1844	CA2044	CA2444	CA2644	CA2844	CA3044	CA3244	CA3644
CA1848	CA2048	CA2448	CA2648	CA2848	CA3048	CA3248	CA3648
CA1854	CA2054	CA2454	CA2654	CA2854	CA3054	CA3254	CA3654
CA1860	CA2060	CA2460	CA2660	CA2860	CA3060	CA3260	CA3660
CA1866	CA2066	CA2466	CA2666	CA2866	CA3066	CA3266	CA3666
CA1872	CA2072	CA2472	CA2672	CA2872	CA3072	CA3272	CA3672

24"	24 1/2"
28"	28 1/2"
30"	30 1/2"
32"	32 1/2"
36"	36 1/2"
42"	42 1/2"
44"	44 1/2"
48"	48 1/2"
54"	54 1/2"
60"	60 1/2"
66"	66 1/2"
72"	72 1/2"

Custom Sizes Also Available

Standard Sizes



Rough Opening	36½"	42½"	44½"	48½"	52½"	56½"	60½"	64½"	66½"	68½"	72½"
Unit Size	36"	42"	44"	48"	52"	56"	60"	64"	66"	68"	72"

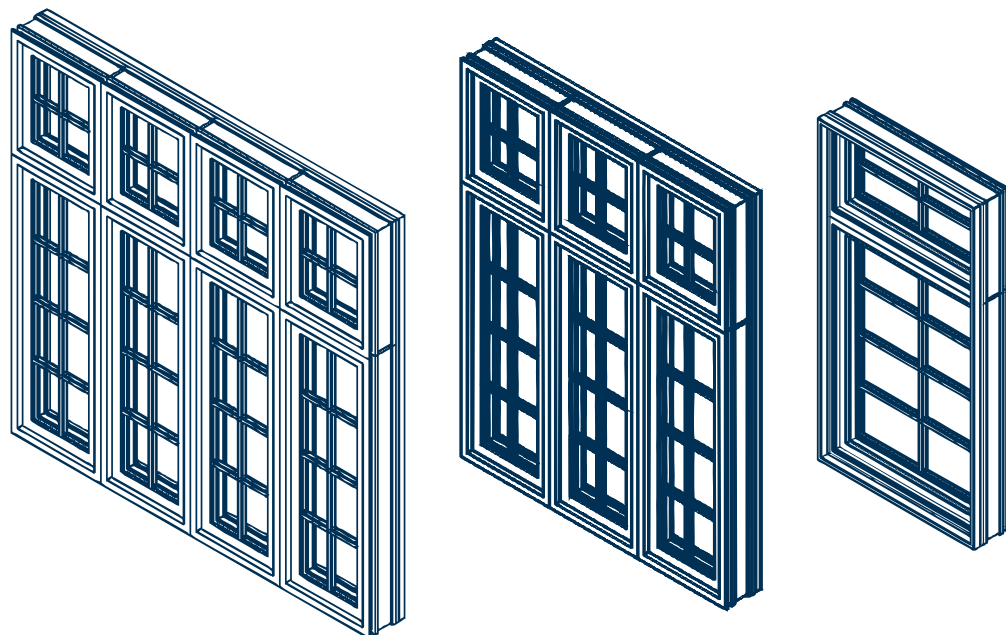


CASEMENT
PICTURE

CAP3636	CAP4236	CAP4436	CAP4836	CAP5236	CAP5636	CAP6036	CAP6436	CAP6636	CAP6836	CAP7236
CAP3642	CAP4242	CAP4442	CAP4842	CAP5242	CAP5642	CAP6042	CAP6442	CAP6642	CAP6842	CAP7242
CAP3644	CAP4244	CAP4444	CAP4844	CAP5244	CAP5644	CAP6044	CAP6444	CAP6644	CAP6844	CAP7244
CAP3648	CAP4248	CAP4448	CAP4848	CAP5248	CAP5648	CAP6048	CAP6448	CAP6648	CAP6848	CAP7248
CAP3654	CAP4254	CAP4454	CAP4854	CAP5254	CAP5654	CAP6054	CAP6454	CAP6654	CAP6854	CAP7254
CAP3660	CAP4260	CAP4460	CAP4860	CAP5260	CAP5660	CAP6060	CAP6460	CAP6660	CAP6860	CAP7260
CAP3666	CAP4266	CAP4466	CAP4866	CAP5266	CAP5666	CAP6066	CAP6466	CAP6666	CAP6866	CAP7266
CAP3672	CAP4272	CAP4472	CAP4872	CAP5272	CAP5672	CAP6072	CAP6472	CAP6672	CAP6872	CAP7272

36"	36½"	42"	42½"	44"	44½"	48"	48½"	54"	54½"	60"	60½"	66"	66½"	72"	72½"
-----	------	-----	------	-----	------	-----	------	-----	------	-----	------	-----	------	-----	------

Example Configurations



Custom Sizes Also Available

Standard Sizes



Rough Opening	24 1/2"	28 1/2"	30 1/2"	32 1/2"	36 1/2"	42 1/2"	48 1/2"	54 1/2"	60 1/2"
Unit Size	24"	28"	30"	32"	36"	42"	48"	54"	60"



AWNING

AW2418	AW2818	AW3018	AW3218	AW3618	AW4218	AW4818	AW5418	AW6018
AW2420	AW2820	AW3020	AW3220	AW3620	AW4220	AW4820	AW5420	AW6020
AW2424	AW2824	AW3024	AW3224	AW3624	AW4224	AW4824	AW5424	AW6024
AW2428	AW2828	AW3028	AW3228	AW3628	AW4228	AW4828	AW5428	AW6028
AW2430	AW2830	AW3030	AW3230	AW3630	AW4230	AW4830	AW5430	AW6030
AW2432	AW2832	AW3032	AW3232	AW3632	AW4232	AW4832	AW5432	AW6032
AW2436	AW2836	AW3036	AW3236	AW3636	AW4236	AW4836	AW5436	AW6036
AW2440	AW2840	AW3040	AW3240	AW3640	AW4240	AW4840	AW5440	AW6040
AW2442	AW2842	AW3042	AW3242	AW3642	AW4242	AW4842	AW5442	AW6042
AW2448	AW2848	AW3048	AW3248	AW3648	AW4248	AW4848	AW5448	AW6048

18"
20"
24"
28"
30"
32"
36"
40"
42"
48"
18 1/2"
20 1/2"
24 1/2"
28 1/2"
30 1/2"
32 1/2"
36 1/2"
40 1/2"
42 1/2"
48 1/2"

Custom Sizes Also Available

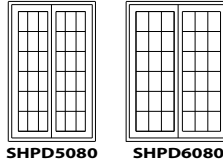
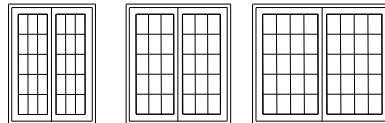
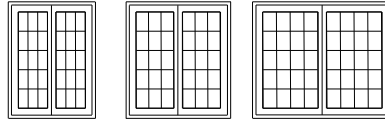


PATIO DOORS

Rough Opening	60"	72"	96"
---------------	-----	-----	-----

Unit Size	59.5"	71.5"	95.5"
-----------	-------	-------	-------

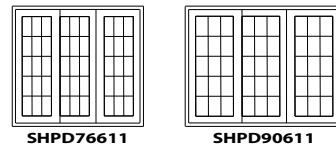
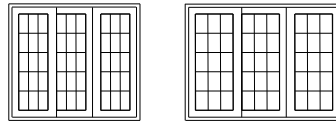
Two Panel



Rough Opening	90"	108"
---------------	-----	------

Unit Size	89.5"	107.5"
-----------	-------	--------

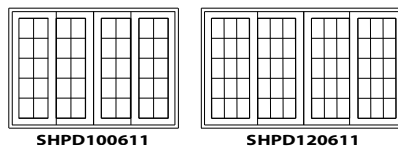
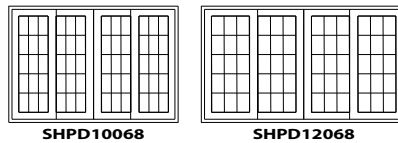
Three Panel



Rough Opening	90"	108"
---------------	-----	------

Unit Size	89.5"	107.5"
-----------	-------	--------

Four Panel



80"	82.5"	96"
79.5"	82"	95.5"



80"	82.5"
79.5"	82"



80"	82.5"
79.5"	82"

 **MATHEWS
BROTHERS**
AMERICA'S OLDEST WINDOW MANUFACTURER

**170
YEARS**



 **SANFORD HILLS**

COLLECTION 

SANFORD HILLS OFFERS LIKE NO OTHER
VERSATILITY | VAST CUSTOMIZATION | HISTORICAL ACCURACY

